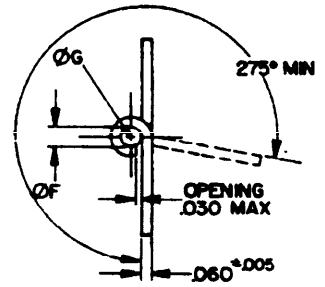
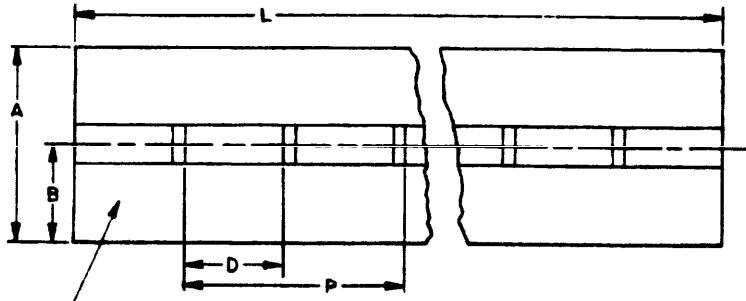


USER ACTIVITIES:
NAVY - MC



IMPRESS PART NUMBER AT A MAXIMUM OF 5 INCH INTERVALS

TABLE 1. DASH NUMBERS AND DIMENSIONS

| DASH NO. | WIDTH | | STOCK LENGTH L ±.03 | KNUCKLE LENGTH $\frac{1}{D}$ | PITCH $\frac{2}{P}$ | KNUCKLE $\varnothing F$ | PIN $\varnothing G$ |
|----------|----------|------------|---------------------------|---|---|--|------------------------------------|
| | A REF | B ±.031 | | | | | |
| 9 | 1.062 | .531 | 84.00 SEE NOTE: 2 | .998 ^{+.000} _{-.015} | 2.000 ^{+.015} _{-.003} | .192 ^{+.007} _{-.001} | .187 ⁺ _{-.002} |
| 10 | 1.500 | .750 | | | | | |
| 11 | 2.000 | 1.000 | 84.00 SEE NOTE: 2 | 1.998 ^{+.000} _{-.015} | 4.000 ^{+.015} _{-.003} | .192 ^{+.007} _{-.001} | .187 ⁺ _{-.002} |
| 12 | 2.500 | 1.250 | | | | | |
| 13 | 1.062 | .531 | 84.00 SEE NOTE: 2 | .998 ^{+.000} _{-.015} | 2.000 ^{+.015} _{-.003} | .192 ^{+.007} _{-.001} | .187 ⁺ _{-.002} |
| 14 | 1.500 | .750 | | | | | |
| 15 | 2.000 | 1.000 | 84.00 SEE NOTE: 2 | 1.998 ^{+.000} _{-.015} | 4.000 ^{+.015} _{-.003} | .192 ^{+.007} _{-.001} | .187 ⁺ _{-.002} |
| 16 | 2.500 | 1.250 | | | | | |

1/ SEE REQUIREMENT 3

2/ SEE REQUIREMENT 4

DISTRIBUTION STATEMENT A. Approved for public release; distribution is unlimited.

This military standard is approved for use by all Departments and Agencies of the Department of Defense. Selection for all new engineering and design applications and for repetitive use shall be made from this document when applicable.

REVIEWER ACTIVITIES:
ARMY - AT, AV, MI, GL
AIR FORCE - 82
DLA - IS

Ⓔ ENTIRE STANDARD REVISED

INCH - POUND

| | | | | |
|--|------------------------|--|-------------------|--|
| P.A. ARMY - AR Other Cust NAVY - AS AIR FORCE - 99 | INTERNATIONAL INTEREST | TITLE HINGE, BUTT, CONTINUOUS (PIANO) .060 THICKNESS, .187 PIN DIA | MILITARY STANDARD | |
| | | | MS35826 | |
| PROCUREMENT SPECIFICATION MIL-H-9850 | SUPERSEDES | PAGE 1 OF 2 | | |

REQUIREMENTS:

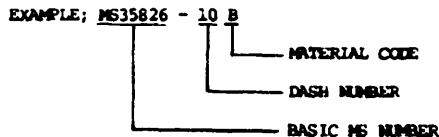
1. **MATERIAL:**
 - A. ALUMINUM-LEAF-TEMPER, H24 OR H34 HALF-HARD (UNS A95052), IN ACCORDANCE WITH QQ-A-250/8. ALUMINUM-PIN-TEMPER, HALF-HARD (UNS A95052), IN ACCORDANCE WITH QQ-A-225/7.
 - B. BRASS-LEAF-ALLOY 268 (UNS C26800) TEMPER HALF-HARD, IN ACCORDANCE WITH QQ-B-613. COPPER-PIN-ALLOY 260 (UNS C26000) TEMPER HALF-HARD, IN ACCORDANCE WITH QQ-W-321.
 - C. CORROSION RESISTANT STEEL-LEAF-CLASS 301 (UNS S30100), 302 (UNS S30200) OR 304 (UNS S30400) CONDITION A, TEMPER ANNEALED, IN ACCORDANCE WITH QQ-S-766. CORROSION RESISTANT STEEL-PIN-FORM 1, CONDITION B, COMPOSITION 302 (UNS S30200), 304 (UNS S30400) AND 316 (UNS S31600) IN ACCORDANCE WITH ASTM A313.
 - D. CARBON STEEL-LEAF-COLD-ROLLED, TEMPER NO. 4 IN ACCORDANCE WITH QQ-S-698. CARBON STEEL-PIN-COMPOSITION 1010 (UNS G10100), 1020 (UNS G10200) IN ACCORDANCE WITH QQ-W-461.
 - E. CARBON STEEL-LEAF-COLD-ROLLED TEMPER NO. 4 IN ACCORDANCE WITH QQ-S-698. COPPER-PIN-ALLOY 260 (UNS C26000), TEMPER HALF-HARD IN ACCORDANCE WITH QQ-W-321.

2. **FINISH:** MATERIAL A, B, C AND D SHALL BE PLAIN (UNCOATED). WHEN SPECIFIED, MATERIAL D SHALL BE ZINC PLATED IN ACCORDANCE WITH ASTM B633 TYPE II, FE/ZN 13 OR CADMIUM PLATED IN ACCORDANCE WITH QQ-P-416 TYPE II CLASS 1. MATERIAL E SHALL BE CADMIUM PLATED IN ACCORDANCE WITH QQ-P-416, TYPE II, CLASS 1.

1/ 3. **KNUCKLES** - END KNUCKLES SHALL BE A MINIMUM 1/2 OF KNUCKLE.

2/ 4. **PITCH** CUMULATIVE TOLERANCE ON PITCH IS $\pm .015$ INCHES IN ANY 36 INCH SEGMENT.

5. **PART NUMBER:** - THE MS PART NUMBER CONSISTS OF THE MS NUMBER PLUS THE DASH NUMBER FOLLOWED BY THE APPLICABLE CODE FOR MATERIAL FROM REQUIREMENT 1.



WHEN PROTECTIVE FINISH IS REQUIRED FOR MATERIAL D, ADD F TO THE PART NUMBER.

NOTES:

1. ALL DIMENSIONS ARE IN INCHES UNLESS OTHERWISE SPECIFIED.
2. HINGES SHALL BE STOCKED AND ISSUED IN LENGTHS OF 84.00 INCHES. APPLICATION MAY BE OF ANY LENGTH WITHIN THE ABOVE LENGTH.
3. IN THE EVENT OF A CONFLICT BETWEEN THE TEXT OF THIS STANDARD AND THE REFERENCES CITED HEREIN, THE TEXT OF THIS STANDARD SHALL TAKE PRECEDENCE.
4. REFERENCED GOVERNMENT OR (NON-GOVERNMENT) DOCUMENTS OF THE ISSUE LISTED IN THAT ISSUE OF THE DEPARTMENT OF DEFENSE INDEX OF SPECIFICATIONS AND STANDARDS (DODISS) SPECIFIED IN THE SOLICITATION FORM A PART OF THIS STANDARD TO THE EXTENT SPECIFIED HEREIN.
5. DASH NUMBERS 1 THRU 8 ARE CANCELLED AND NEW DASH NUMBERS ASSIGNED FOR L DIMENSION (84.00) INCHES.

TABLE II. CROSS REFERENCED OF CANCELLED DASH NUMBERS

| CANCELLED | LENGTH | SUPERSADING | LENGTH |
|-----------|--------|-------------|--------|
| MS35826-1 | 120 | MS35826-9 | 84 |
| MS35826-2 | 120 | MS35826-10 | 84 |
| MS35826-3 | 120 | MS35826-11 | 84 |
| MS35826-4 | 120 | MS35826-12 | 84 |
| MS35826-5 | 120 | MS35826-13 | 84 |
| MS35826-6 | 120 | MS35826-14 | 84 |
| MS35826-7 | 120 | MS35826-15 | 84 |
| MS35826-8 | 120 | MS35826-16 | 84 |

| | | | |
|---|------------------------|---|--------------------------|
| PA ARMY - AR Other Cust NAVY - AS AIR FORCE-99 | INTERNATIONAL INTEREST | TITLE HINGE, BUTT, CONTINUOUS (PIANO) .060 THICKNESS, .187 PIN DIA | MILITARY STANDARD |
| | | | MS35826 |
| PROCUREMENT SPECIFICATION MIL-H-9850 | SUPERSEDES | PAGE 2 | OF 2 |

USER ACTIVITIES:
NAVY - MC

REVIEWER ACTIVITIES:
ARMY - AT, AV, MI, GL
AIR FORCE - 82
DLA - IS

DISTRIBUTION STATEMENT A. Approved for public release; distribution is unlimited. This military standard is approved for use by all Departments and Agencies of the Department of Defense. Deviations for all new engineering and design applications and for repetitive use shall be made from this document when applicable.